

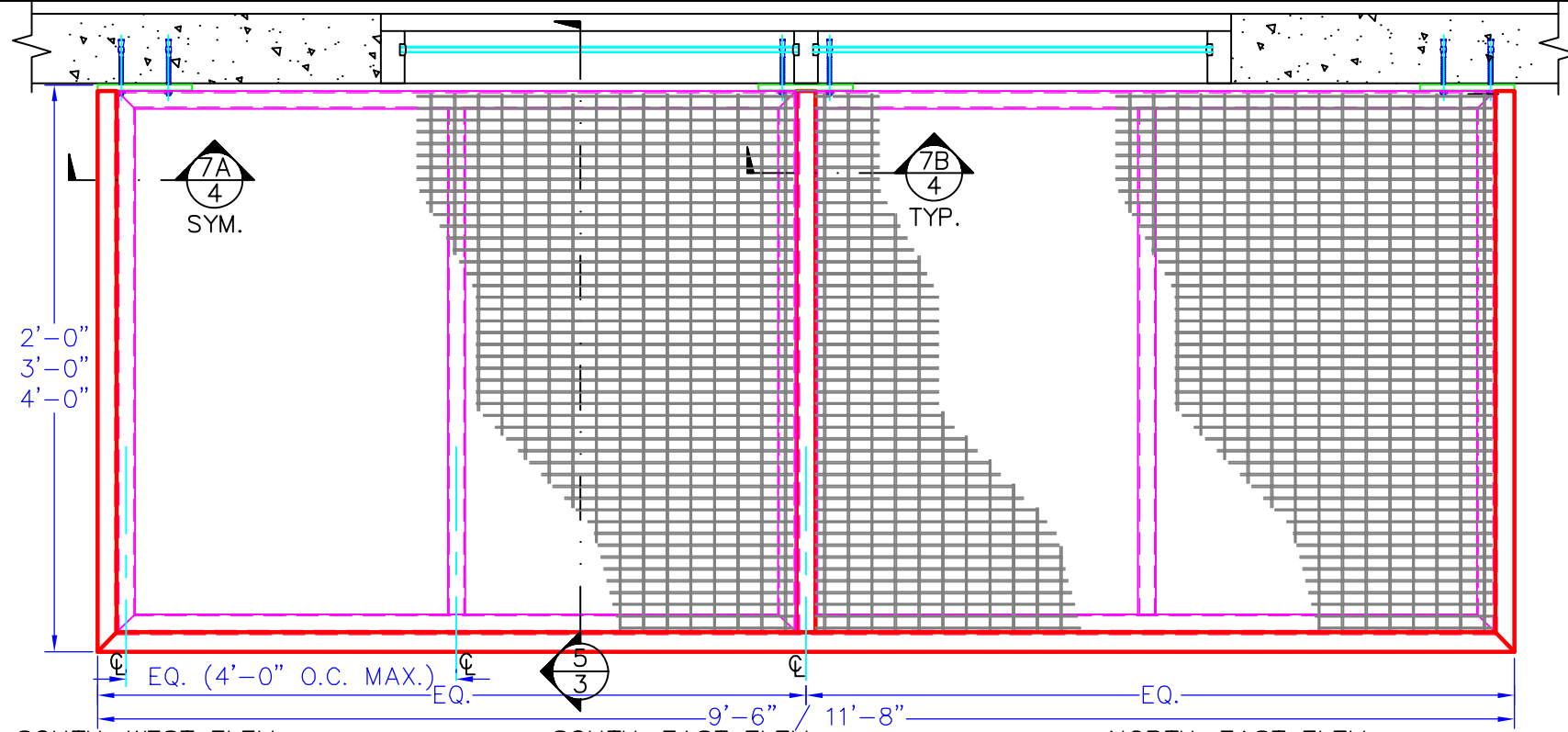
JOB NAME: MEPS #08-011
 29008 1700 EAST GRAND AVENUE
 EL SEGUNDO, CA 90245

3082 EAST MIRALOMA AVE.
 ANAHEIM, CA 92806
 CA LIC. #580921

B & C AWNINGS, INC.
 (714) 632-3303 FAX (714) 632-5632
 bcawningsinc@yahoo.com
 www.bcawnings.com

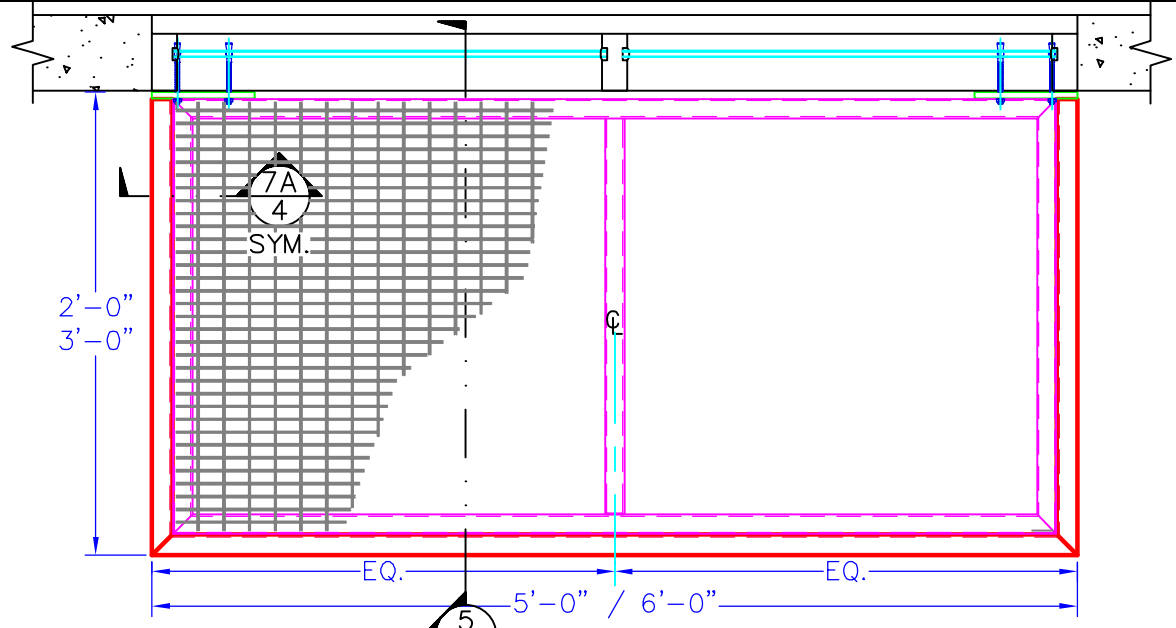


CONTRACTOR/BUYER:
 TG CONSTRUCTION



SOUTH-WEST ELEV.:
 1st. FLR.: 3-UNITS: 9'-6" X 4'-0" 2nd. FLR.: 1-UNIT: 11'-8" X 3'-0"

SOUTH-EAST ELEV.:
 2nd. FLR.: 2-UNITS: 10'-0" X 2'-0"

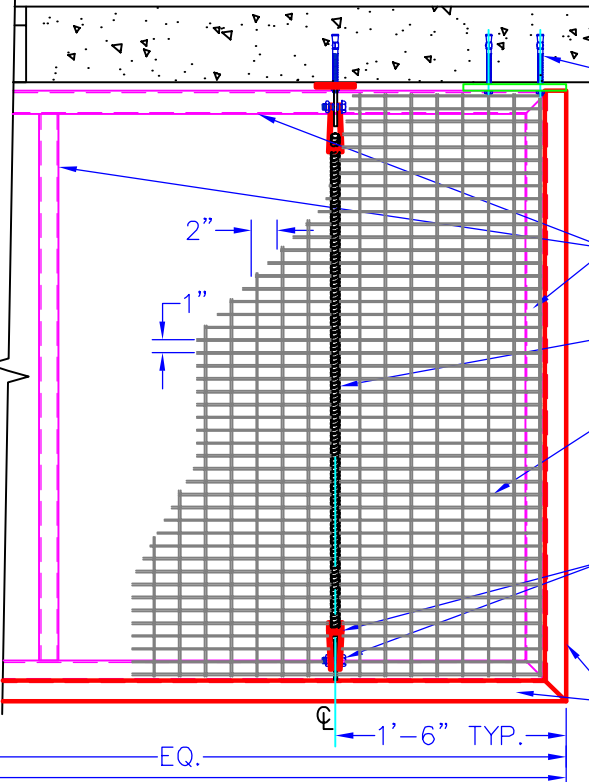
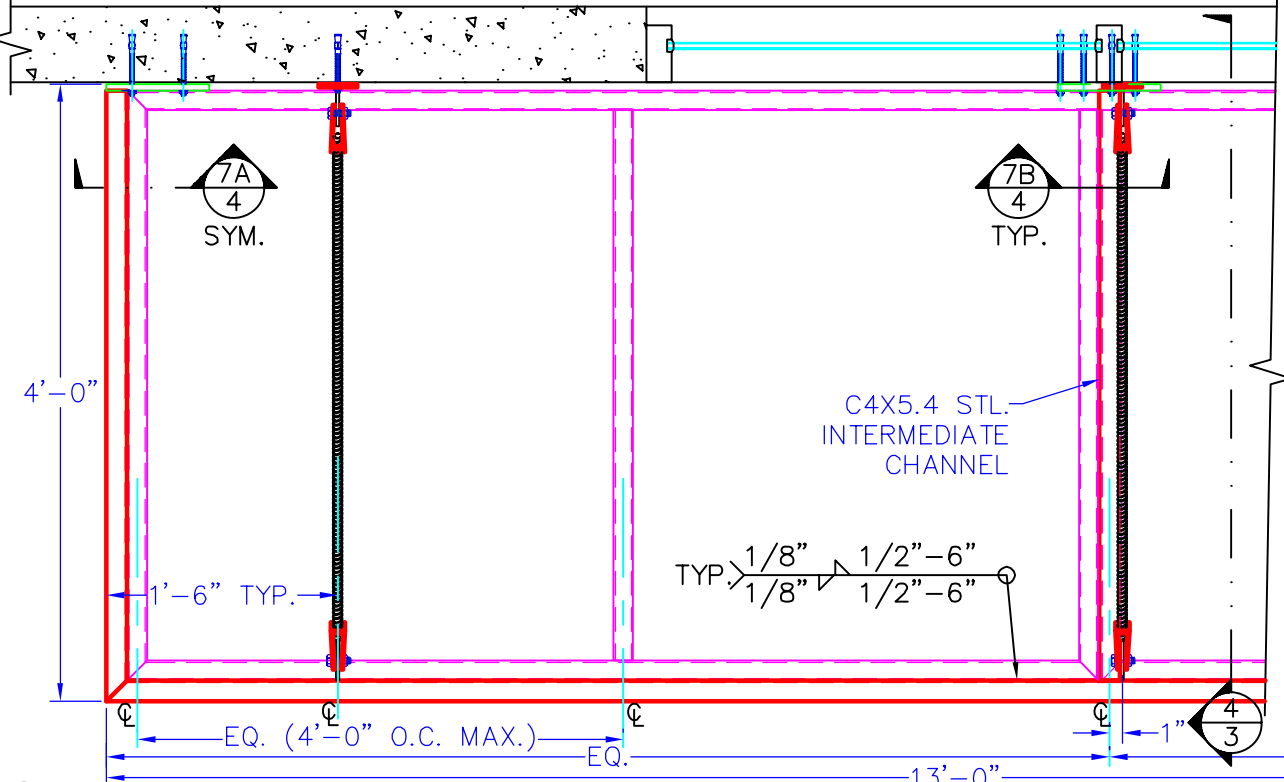


SOUTH-WEST ELEV.:
 1st. FLR.: 5-UNITS: 6'-0" X 3'-0"
 2nd. FLR.: 5-UNITS: 6'-0" X 3'-0"

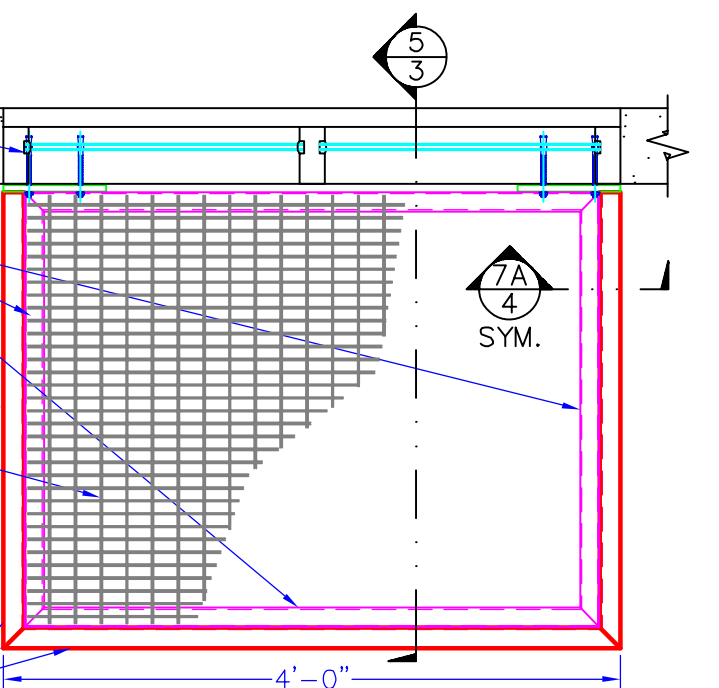
SOUTH-EAST ELEV.:
 1st. FLR.: 4-UNITS: 5'-0" X 3'-0"
 2nd. FLR.: 4-UNITS: 5'-0" X 3'-0"

NORTH-WEST ELEV.:
 2ND. FLR.: 1-UNIT: 5'-0" X 3'-0"
 1-UNIT: 6'-0" X 2'-0"
 2-UNITS: 6'-0" X 3'-0"

NORTH-EAST ELEV.:
 2ND. FLR.: 3-UNITS: 6'-0" X 2'-0"



- 3/8"ØX5" RED HEAD ANCHOR BOLTS, NUTS, & NEOPRENE WASHERS, 4" EMBED. MIN.
- 1-1/2" SQ. STL. TUBES, 16 GA.
- 3/8"Ø HOT DIP GALV. STL. ROD
- #10 GA. STL. WOVEN WIRE MESH (1"X2" MESH)
- S.S. CLEVIS W/ 1/2"ØX1-1/2" BOLT & NUT, DETAIL 4/3
- C4X5.4 STL. PERIMETER CHANNEL



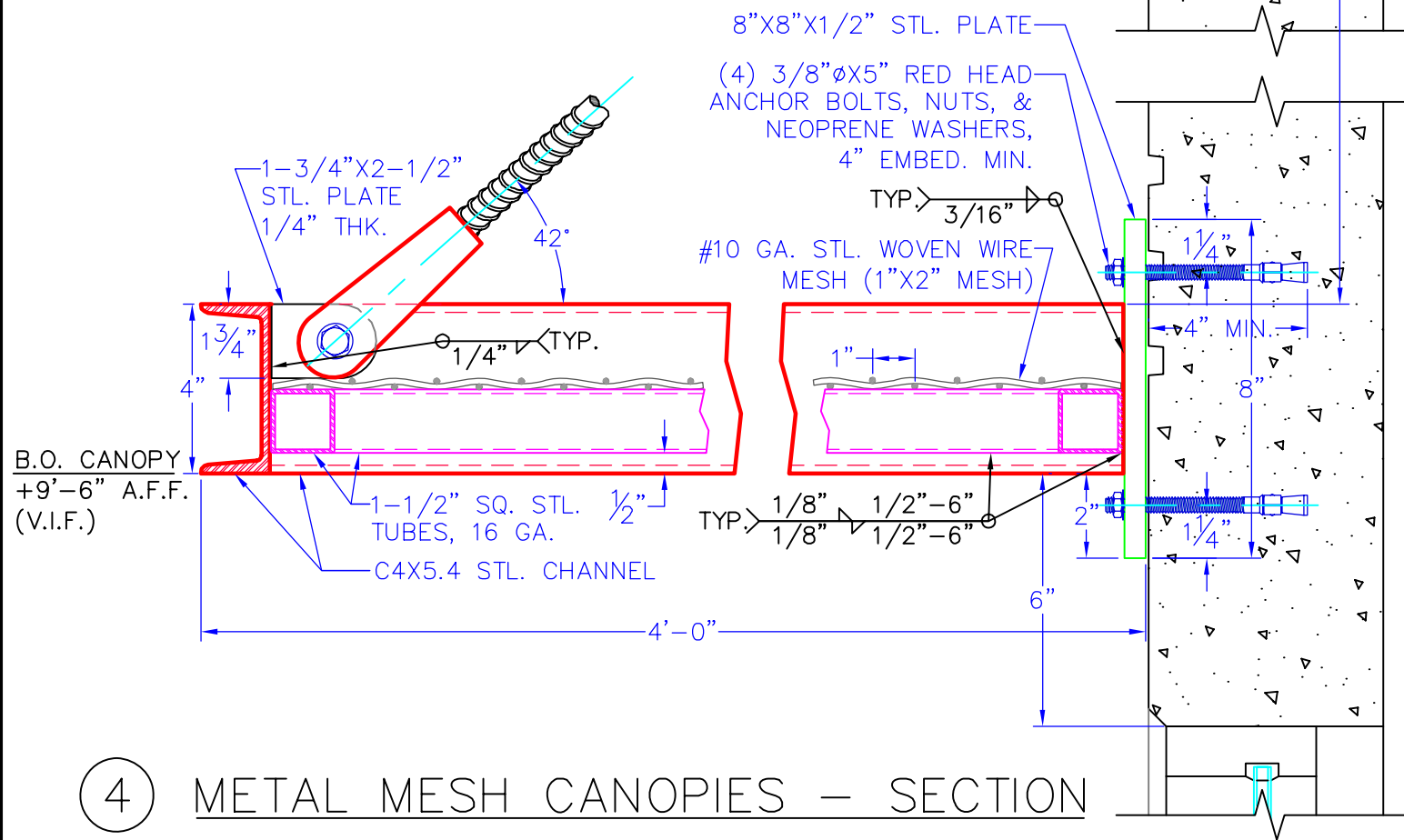
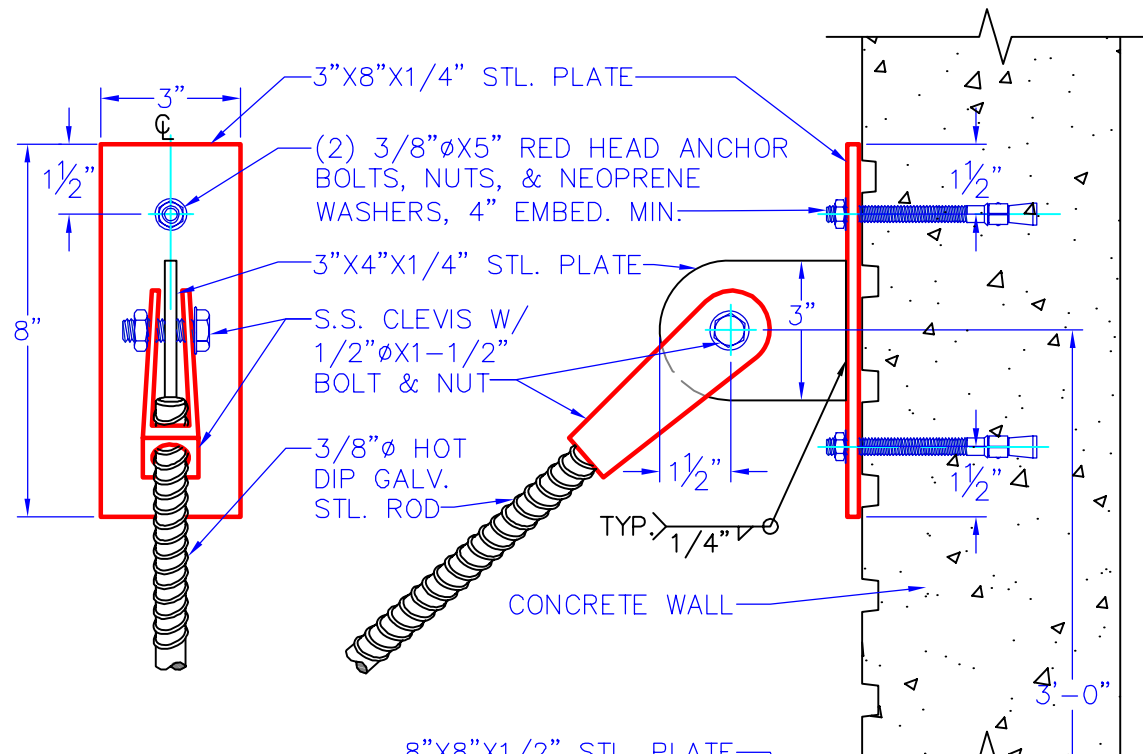
SOUTH-WEST ELEV.:
 1st. FLR.: 3-UNITS: 4'-0" X 3'-0"
 2nd. FLR.: 3-UNITS: 4'-0" X 3'-0"

3 METAL MESH CANOPIES - PLAN SOUTH-WEST ELEV.: 2nd. FLR.: 3-UNITS: 13'-0" X 4'-0"

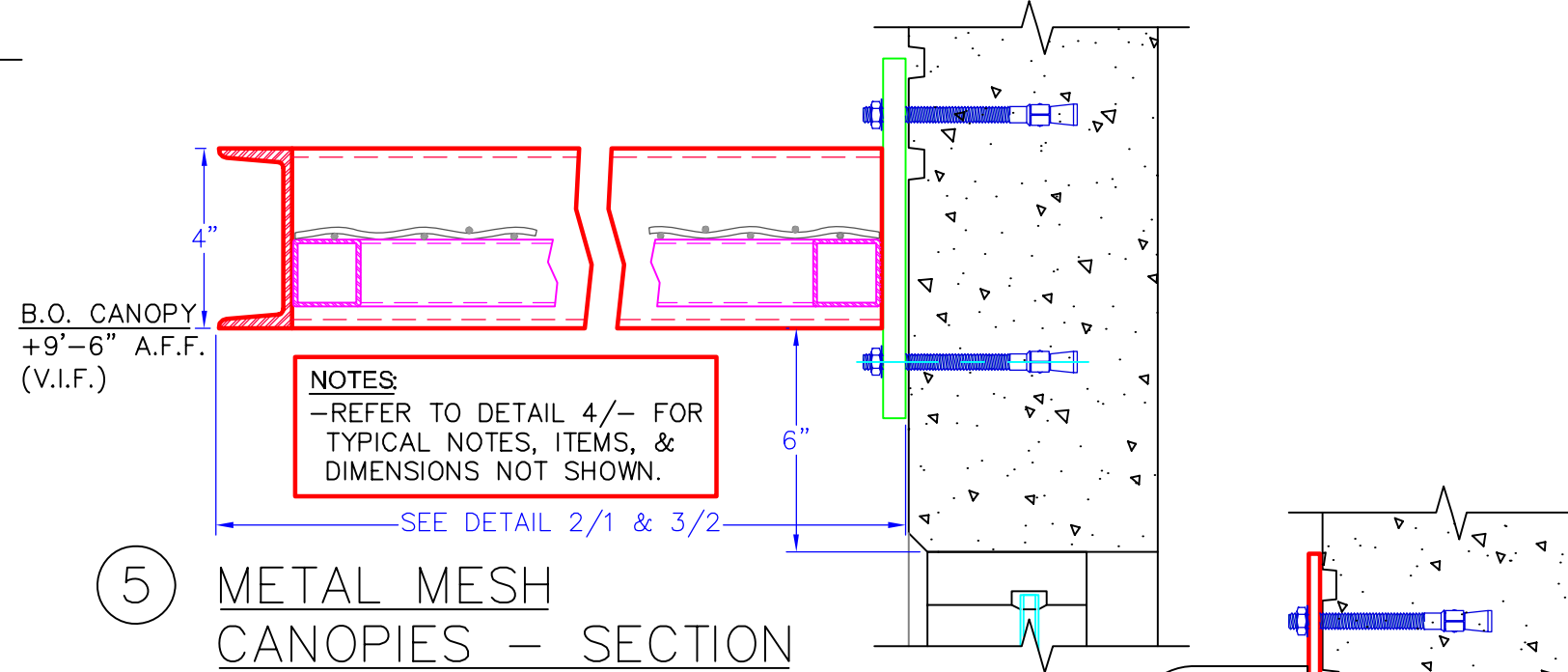
DATE: 02/02/2009
 SCALE: N.T.S.
 SHEET NO.: 2/6

Terms and Conditions of Issue and Acceptance: All the submissions and computer assisted drawings (CAD) herein presented define in detail B & C Awnings Inc's their heirs and assigns intent and scope of work (hereafter called Provider). They are the final definitive complete inventory and agreement of what the buyer, agent general contractor their heirs or assigns (hereafter the Buyer) agrees to buy superseding plans and specifications issued prior to approval date. It is a specific condition of issue that failure of the Buyer to out rightly reject and return submissions is understood to constitute a full contractual acceptance of them together with all the terms. Buyer agrees to perform regular maintenance and services of a professional Sealer, Caulker, or Roofing expert to complete the seal of the installation and units. Engineering, permits, tests inspections caulking, sealing, flashing are all excluded. Buyer agrees to hereafter indemnify, hold harmless and will pay the attorney fees to protect the Providers interests making no further use of Provider copyrighted submissions and to defend the Provider from any legal action or claim of

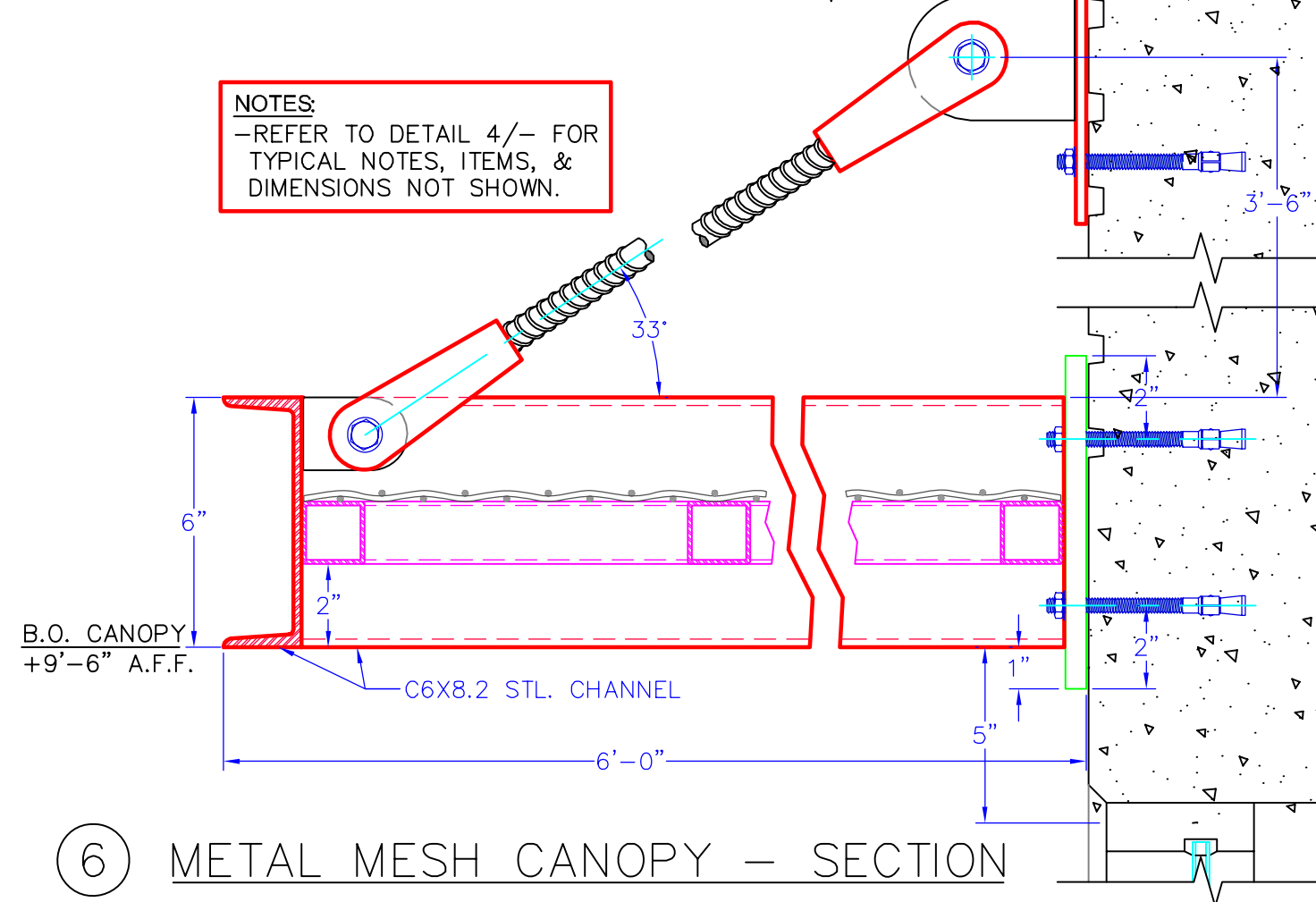
what so ever nature associated therewith or emanating there from for any product labor or service rendered by Provider including not limited to allegations of defects present or latent, design deficiencies or construction building damage, water penetration, defective work, sealants, caulking flashing after the said expiration date of the standard guarantee/warranty limited to one year only following the date shown below. Additional, warranty exclusions are Fabric, Vinyl, Material Covers, Metal Finishes purchased by Provider previously manufactured by others the subject of a separate Independent Manufacturers Warranty and where provided by Provider is for product information only. The terms of the Provider Warranty expressly "excluding" any liability or Warranty to supply labor for replacement of Fabric, Vinyl, Material Covers, Metal Finishes manufactured by others. Thereafter, the Buyer must file a claim against that Manufacturer of those Finishes, Fabrics, Applications, Labor or Materials which are the subject of Buyers claim to the exclusion of Provider who have no control and are indemnified here in from liability by Buyer.



④ METAL MESH CANOPIES - SECTION



⑤ METAL MESH CANOPIES - SECTION



⑥ METAL MESH CANOPY - SECTION

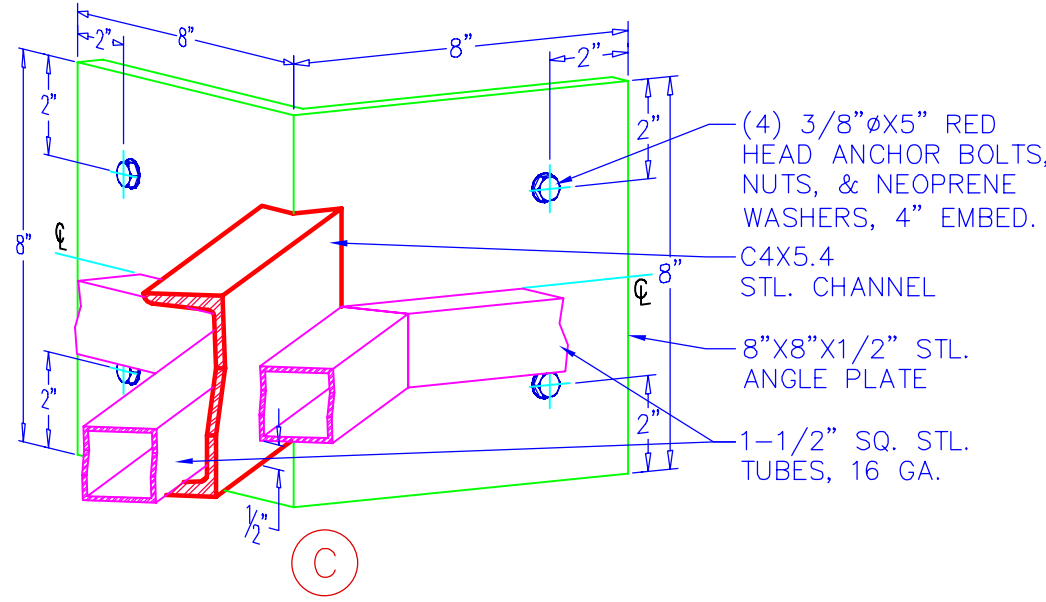
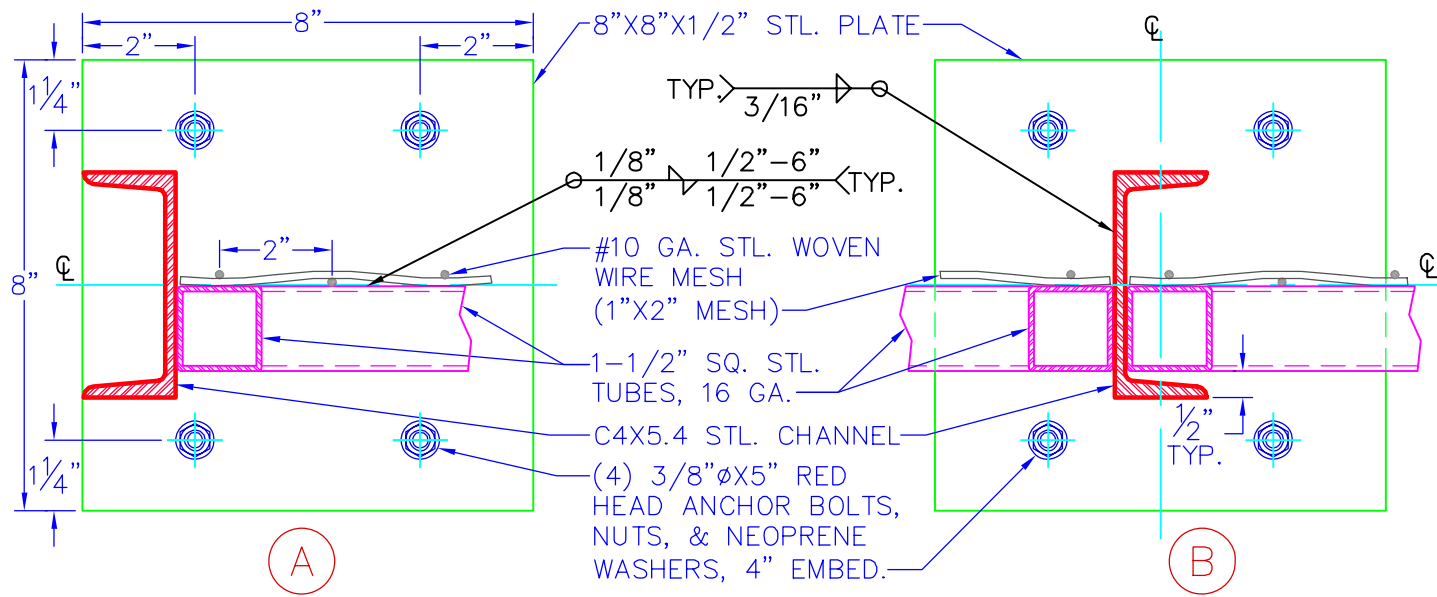
JOB NAME: MEPS #08-011
29008 1700 EAST GRAND AVENUE
EL SEGUNDO, CA 90245

3082 EAST MIRALOMA AVE.
ANAHEIM, CA 92806
CA LIC. #580921

B & C AWNINGS, INC.
(714) 632-3303 FAX (714) 632-5632
bcawningsinc@yahoo.com
www.bcawnings.com

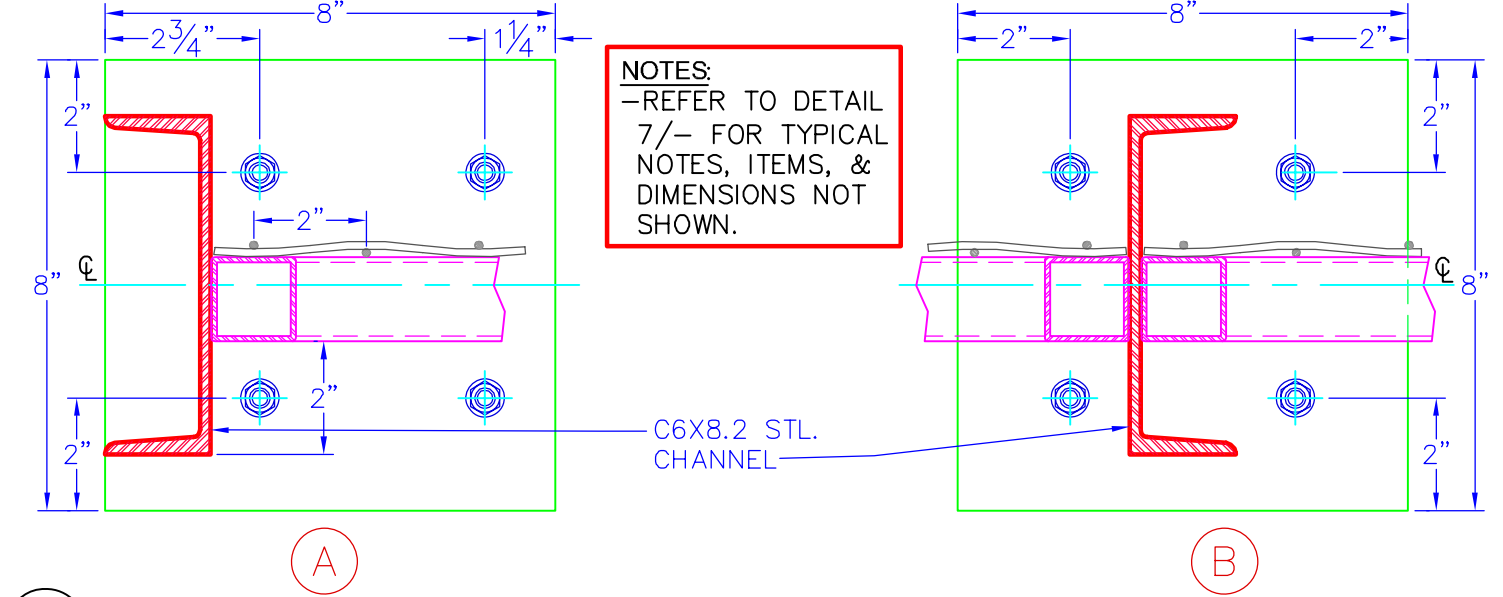


CONTRACTOR/BUYER:
TG CONSTRUCTION

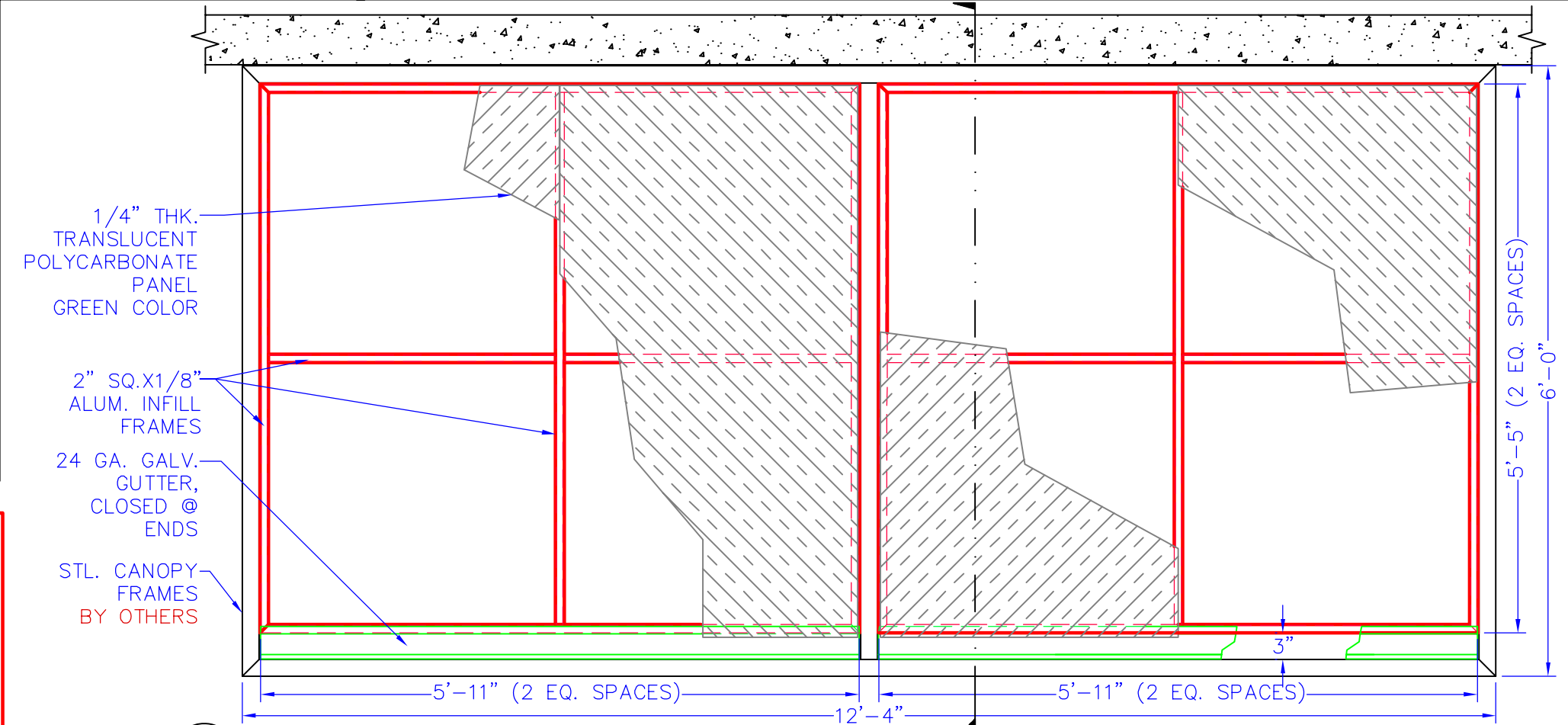


7 STEEL PLATE @ C4X5.4 DETAIL

NOTES: UNLESS OTHERWISE SPECIFIED.
-FRAMES: 2" SQ.X1/8" ALUM. TUBE 6063-T5, COVERED W/ 1/4" TRANSLUCENT POLYCARBONATE PANEL, GREEN COLOR.
-FINISH: POWDER COATED W/ A SINGLE APPLICATION OF TIGER DRYLAC SERIES 49.
-COLOR: RAL 7004 "DARK GREY".
-ALL FASTENERS SHALL BE ZINC-PLATED.
-ALL DIMENSIONS: VERIFY IN FIELD.
-INSTALLATION OF CONTINUOUS BACKING / BLOCKING TYPE/ LOCATION / SIZE - ENGINEERED - BY OTHERS.



8 STEEL PLATE @ C6X8.2 DETAIL



9 ALUM. INFILL FRAMES - PLAN NORTH-WEST ELEV.: 1st. FLR.: 1-UNIT: 12'-4" X 6'-0"

DATE: 02/02/2009
SCALE: N.T.S.
SHEET NO.: 4/6

Terms and Conditions of Issue and Acceptance: All the submissions and computer assisted drawings (CAD) herein presented define in detail B & C Awnings Inc's their heirs and assignees intent and scope of work (hereafter called Provider). They are the final definitive complete inventory and agreement of what the buyer, agent general contractor their heirs or assignees (hereafter the Buyer) agrees to buy superseding plans and specifications issued prior to approval date. It is a specific condition of issue that failure of the Buyer to out rightly reject and return submissions is understood to constitute a full contractual acceptance of them together with all the terms. Buyer agrees to perform regular maintenance and services of a professional Sealer, Caulker, or Roofing expert to complete the seal of the installation and units. Engineering, permits, tests inspections caulking, sealing, flashing are all excluded. Buyer agrees to hereafter indemnify, hold harmless and will pay the attorney fees to protect the Providers interests making no further use of Provider copyrighted submissions and to defend the Provider from any legal action or claim of

what so ever nature associated therewith or emanating there from for any product labor or service rendered by Provider including not limited to allegations of defects present or latent, design deficiencies or construction building damage, water penetration, defective work, sealants, caulking flashing after the said expiration date of the standard guarantee/warranty limited to one year only following the date shown below. Additional, warranty exclusions are Fabric, Vinyl, Material Covers, Metal Finishes purchased by Provider previously manufactured by others the subject of a separate Independent Manufacturers Warranty and where provided by Provider is for product information only. The terms of the Provider Warranty expressly "excluding" any liability or Warranty to supply labor for replacement of Fabric, Vinyl, Material Covers, Metal Finishes manufactured by others. Thereafter, the Buyer must file a claim against that Manufacturer of those Finishes, Fabrics, Applications, Labor or Materials which are the subject of Buyers claim to the exclusion of Provider who have no control and are indemnified here in from liability by Buyer.